

WEST HILLS INCORPORATION

A PART OF SECTIONS 2, 3, 10, 11, 12, 13, 14, 15, 22, 23 AND 24, TOWNSHIP 2 SOUTH, RANGE 5 EAST, AND A PART OF SECTIONS 18 AND 19, TOWNSHIP 2 SOUTH, RANGE 6 EAST, SALT LAKE BASE AND MERIDIAN
SUMMIT COUNTY, UTAH
OCTOBER 2024

INCORPORATION DESCRIPTION

A DESCRIPTION FOR THE INCORPORATION OF WEST HILLS BEING A PART OF SECTIONS 2, 10, 11, 12, 13, 14, 15, 22, 23 AND 24, TOWNSHIP 2 SOUTH, RANGE 5 EAST SALT LAKE BASE AND MERIDIAN AND PART OF SECTIONS 18 AND 19, TOWNSHIP 2 SOUTH, RANGE 6 EAST, SALT LAKE BASE AND MERIDIAN, SUMMIT COUNTY, UTAH, MORE PARTICULARLY DESCRIBED AS FOLLOWS:

COMMENCING AT THE SOUTHWEST CORNER OF SAID SECTION 18 AND RUNNING THENCE NORTH 0°31'45"WEST 2688.27 FEET, MORE OR LESS, ALONG THE TOWNSHIP LINE TO THE POINT OF BEGINNING;

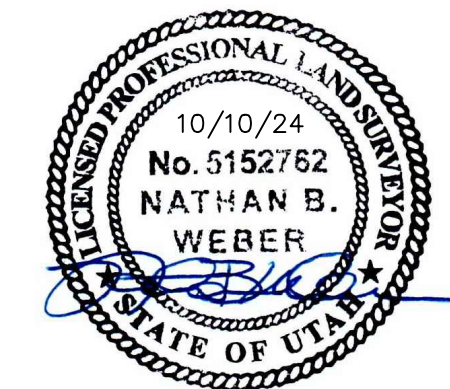
THENCE NORTH 0°30'54"WEST 84.26 FEET, MORE OR LESS;
 THENCE NORTH 55°35'53"EAST 511.09 FEET, MORE OR LESS;
 THENCE NORTH 60°41'24"EAST 653.52 FEET, MORE OR LESS;
 THENCE NORTH 66°00'21"EAST 334.65 FEET, MORE OR LESS;
 THENCE SOUTH 73°19'25"EAST 79.87 FEET, MORE OR LESS;
 THENCE SOUTH 47°06'07"EAST 110.00 FEET, MORE OR LESS;
 THENCE SOUTH 66°01'57"WEST 202.51 FEET, MORE OR LESS;
 THENCE SOUTH 1°18'13"WEST 263.71 FEET, MORE OR LESS;
 THENCE SOUTH 82°14'38"EAST 137.39 FEET, MORE OR LESS;
 THENCE SOUTH 29°17'23"EAST 147.00 FEET, MORE OR LESS;
 THENCE SOUTH 81°55'00"EAST 63.87 FEET, MORE OR LESS;
 THENCE SOUTH 6°51'56"WEST 215.19 FEET, MORE OR LESS;
 THENCE NORTH 84°32'56"WEST 407.31 FEET, MORE OR LESS;
 THENCE SOUTH 5°10'11"WEST 534.74 FEET, MORE OR LESS;
 THENCE SOUTH 8°42'24"WEST 768.98 FEET, MORE OR LESS;
 THENCE SOUTH 84°32'56"EAST 454.75 FEET, MORE OR LESS;
 THENCE SOUTH 5°10'19"WEST 211.01 FEET, MORE OR LESS;
 THENCE SOUTH 88°45'18"WEST 474.16 FEET, MORE OR LESS;
 THENCE SOUTH 1°20'10"WEST 380.30 FEET, MORE OR LESS;
 THENCE NORTH 88°45'18"EAST 437.09 FEET, MORE OR LESS;
 THENCE SOUTH 0°01'46"EAST 199.03 FEET, MORE OR LESS;
 THENCE SOUTH 88°45'16"WEST 654.81 FEET, MORE OR LESS;
 THENCE SOUTH 0°22'19"EAST 199.49 FEET, MORE OR LESS;
 THENCE NORTH 88°45'18"EAST 653.62 FEET, MORE OR LESS;
 THENCE SOUTH 0°01'53"EAST 1669.55 FEET, MORE OR LESS;
 THENCE SOUTH 26°34'04"EAST 108.59 FEET, MORE OR LESS;
 THENCE NORTH 82°57'02"EAST 60.42 FEET, MORE OR LESS;
 THENCE SOUTH 0°15'02"EAST 178.01 FEET, MORE OR LESS;
 THENCE NORTH 89°44'58"EAST 118.00 FEET, MORE OR LESS;
 THENCE NORTH 0°15'02"WEST 192.08 FEET, MORE OR LESS, TO A POINT ON A CURVE;
 THENCE NORTHEASTERLY 110.90 FEET ALONG THE ARC OF A 775.28 FOOT RADIUS CURVE TO THE LEFT, THROUGH A CENTRAL ANGLE OF 8°11'46"AND A LONG CHORD BEARING NORTH 79°24'03"EAST 110.81 FEET, MORE OR LESS, TO A POINT OF COMPOUND CURVATURE;
 THENCE NORTHEASTERLY 97.55 FEET ALONG THE ARC OF A 766.62 FOOT RADIUS CURVE TO THE LEFT, THROUGH A CENTRAL ANGLE OF 7°17'26"AND A LONG CHORD BEARING NORTH 71°38'03"EAST 97.48 FEET, MORE OR LESS;
 THENCE NORTH 67°59'20"EAST 17.70 FEET, MORE OR LESS;
 THENCE NORTH 0°15'02"WEST 97.70 FEET, MORE OR LESS;
 THENCE NORTH 67°48'05"EAST 169.61 FEET, MORE OR LESS;
 THENCE NORTH 0°10'33"WEST 277.58 FEET, MORE OR LESS;
 THENCE NORTH 89°44'58"EAST 200.00 FEET, MORE OR LESS;
 THENCE SOUTH 0°15'02"EAST 295.90 FEET, MORE OR LESS;
 THENCE NORTH 67°59'20"EAST 591.46 FEET, MORE OR LESS;
 THENCE SOUTH 0°01'10"EAST 567.08 FEET, MORE OR LESS;
 THENCE SOUTH 89°44'58"WEST 904.71 FEET, MORE OR LESS;
 THENCE SOUTH 0°15'02"EAST 78.43 FEET, MORE OR LESS;
 THENCE SOUTH 89°44'58"WEST 109.09 FEET, MORE OR LESS;
 THENCE SOUTH 0°15'02"EAST 240.09 FEET, MORE OR LESS;
 THENCE SOUTH 62°14'42"EAST 50.45 FEET, MORE OR LESS;
 THENCE SOUTH 14°59'02"EAST 882.47 FEET, MORE OR LESS;
 THENCE NORTH 89°54'03"EAST 740.00 FEET, MORE OR LESS;
 THENCE SOUTH 89°07'00"EAST 267.59 FEET, MORE OR LESS;

THENCE SOUTH 0°19'00"EAST 2082.27 FEET, MORE OR LESS;
 THENCE SOUTH 89°58'37"WEST 248.43 FEET, MORE OR LESS;
 THENCE NORTH 0°18'48"WEST 751.37 FEET, MORE OR LESS;
 THENCE SOUTH 89°41'03"WEST 1326.14 FEET, MORE OR LESS;
 THENCE SOUTH 0°04'14"EAST 1346.26 FEET, MORE OR LESS;
 THENCE NORTH 89°57'09"WEST 1331.06 FEET, MORE OR LESS;
 THENCE NORTH 0°01'32"WEST 1653.17 FEET, MORE OR LESS;
 THENCE NORTH 69°55'47"EAST 537.95 FEET, MORE OR LESS;
 THENCE NORTH 35°39'29"WEST 867.46 FEET, MORE OR LESS;
 THENCE NORTH 0°25'58"WEST 1411.71 FEET, MORE OR LESS;
 THENCE NORTH 83°24'53"EAST 372.01 FEET, MORE OR LESS, TO A POINT ON A CURVE;
 THENCE NORTHWESTERLY 265.89 FEET ALONG THE ARC OF A 720.05 FOOT RADIUS CURVE TO THE LEFT, THROUGH A CENTRAL ANGLE OF 21°09'28"AND A LONG CHORD BEARING NORTH 17°09'56"WEST 264.39 FEET, MORE OR LESS;
 THENCE SOUTH 62°15'20"WEST 146.49 FEET, MORE OR LESS;
 THENCE SOUTH 88°30'02"WEST 163.79 FEET, MORE OR LESS;
 THENCE NORTH 0°28'34"WEST 679.85 FEET, MORE OR LESS;
 THENCE SOUTH 89°21'34"WEST 1521.74 FEET, MORE OR LESS;
 THENCE SOUTH 0°07'35"EAST 1381.13 FEET, MORE OR LESS;
 THENCE SOUTH 65°04'50"WEST 849.46 FEET, MORE OR LESS;
 THENCE SOUTH 64°34'59"WEST 1167.21 FEET, MORE OR LESS;
 THENCE SOUTH 59°06'52"WEST 568.71 FEET, MORE OR LESS;
 THENCE SOUTH 51°51'52"WEST 328.05 FEET, MORE OR LESS;
 THENCE SOUTH 44°35'36"WEST 422.37 FEET, MORE OR LESS;
 THENCE SOUTH 40°41'58"WEST 215.53 FEET, MORE OR LESS;
 THENCE SOUTH 32°05'28"WEST 384.16 FEET, MORE OR LESS;
 THENCE SOUTH 31°47'53"WEST 1064.30 FEET, MORE OR LESS;
 THENCE SOUTH 0°00'53"WEST 435.23 FEET, MORE OR LESS;
 THENCE NORTH 89°31'40"WEST 2658.69 FEET, MORE OR LESS;
 THENCE SOUTH 89°03'47"WEST 14.49 FEET, MORE OR LESS;
 THENCE NORTH 85°37'03"WEST 1080.59 FEET, MORE OR LESS;
 THENCE NORTH 56°51'21"WEST 1370.67 FEET, MORE OR LESS;
 THENCE NORTH 34°44'19"WEST 932.04 FEET, MORE OR LESS;
 THENCE NORTH 74°00'39"WEST 1785.51 FEET, MORE OR LESS;
 THENCE SOUTH 62°23'51"WEST 1097.80 FEET, MORE OR LESS;
 THENCE NORTH 76°52'34"WEST 771.20 FEET, MORE OR LESS;
 THENCE NORTH 18°51'18"WEST 524.54 FEET, MORE OR LESS;
 THENCE NORTH 67°07'11"WEST 1476.80 FEET, MORE OR LESS;
 THENCE NORTH 71°7'36"EAST 697.45 FEET, MORE OR LESS;
 THENCE NORTH 6°56'32"EAST 1053.60 FEET, MORE OR LESS;
 THENCE NORTH 3°37'21"WEST 643.73 FEET, MORE OR LESS;
 THENCE NORTH 26°06'29"WEST 1043.85 FEET, MORE OR LESS;
 THENCE NORTH 0°13'53"WEST 4221.08 FEET, MORE OR LESS;
 THENCE SOUTH 89°47'25"EAST 2257.44 FEET, MORE OR LESS;
 THENCE SOUTH 89°47'25"EAST 1185.81 FEET, MORE OR LESS;
 THENCE NORTH 17°24'42"EAST 1246.80 FEET, MORE OR LESS;
 THENCE NORTH 12°04'43"EAST 389.38 FEET, MORE OR LESS TO A POINT ON A CURVE;
 THENCE NORTHEASTERLY 181.39 FEET ALONG THE ARC OF A 194.85 FOOT RADIUS CURVE TO THE LEFT, THROUGH A CENTRAL ANGLE OF 53°20'16"AND A LONG CHORD BEARING NORTH 48°51'05"EAST 174.91 FEET, MORE OR LESS, TO A POINT ON A COMPOUND CURVE;
 THENCE NORTHWESTERLY 499.87 FEET ALONG THE ARC OF A 654.02 FOOT RADIUS CURVE TO THE LEFT, THROUGH A CENTRAL ANGLE OF 43°47'31" AND A LONG CHORD BEARING NORTH 0°19'20"WEST 487.80 FEET, MORE OR LESS TO A POINT ON A COMPOUND CURVE;
 THENCE NORTHWESTERLY 246.15 FEET ALONG THE ARC OF A 653.93 FOOT RADIUS CURVE TO THE LEFT, THROUGH A CENTRAL ANGLE OF 21°34'00"AND A LONG CHORD BEARING NORTH 32°30'20"WEST 244.69 FEET, MORE OR LESS;
 THENCE NORTH 43°17'16"WEST 177.51 FEET, MORE OR LESS, TO A POINT ON A CURVE;
 THENCE NORTHWESTERLY 167.79 FEET ALONG THE ARC OF A 271.21 FOOT RADIUS CURVE TO THE RIGHT, THROUGH A CENTRAL ANGLE OF 35°26'54"AND A LONG CHORD BEARING NORTH 65°38'34"WEST 165.13 FEET, MORE OR LESS;

THENCE NORTH 47°55'00"WEST 166.00 FEET, MORE OR LESS;
 THENCE NORTH 69°23'54"WEST 203.24 FEET, MORE OR LESS, TO A POINT ON A CURVE;
 THENCE NORTHWESTERLY 177.37 FEET ALONG THE ARC OF A 249.06 FOOT RADIUS CURVE TO THE RIGHT, THROUGH A CENTRAL ANGLE OF 40°48'13"AND A LONG CHORD BEARING NORTH 48°59'46"WEST 173.65 FEET, MORE OR LESS;
 THENCE NORTH 28°29'34"WEST 149.53 FEET, MORE OR LESS, TO A POINT ON A CURVE;
 THENCE NORTHWESTERLY 188.90 FEET ALONG THE ARC OF A 298.88 FOOT RADIUS CURVE TO THE LEFT, THROUGH A CENTRAL ANGLE OF 36°12'47"AND A LONG CHORD BEARING NORTH 46°35'57"WEST 185.77 FEET, MORE OR LESS;
 THENCE NORTH 64°42'18"WEST 211.23 FEET, MORE OR LESS;
 THENCE NORTH 58°17'56"WEST 286.09 FEET, MORE OR LESS;
 THENCE NORTH 56°26'18"EAST 1194.66 FEET, MORE OR LESS;
 THENCE SOUTH 66°19'14"EAST 1266.64 FEET, MORE OR LESS;
 THENCE SOUTH 29°51'28"WEST 1208.68 FEET, MORE OR LESS;
 THENCE SOUTH 62°39'31"EAST 119.55 FEET, MORE OR LESS, TO A POINT ON A CURVE;
 THENCE SOUTHEASTERLY 208.66 FEET ALONG THE ARC OF A 298.86 FOOT RADIUS CURVE TO THE LEFT, THROUGH A CENTRAL ANGLE OF 40°00'07"AND A LONG CHORD BEARING SOUTH 82°39'30"EAST 204.44 FEET, MORE OR LESS;
 THENCE NORTH 77°20'30"EAST 190.10 FEET, MORE OR LESS, TO A POINT ON A CURVE;
 THENCE SOUTHEASTERLY 283.99 FEET ALONG THE ARC OF A 597.73 FOOT RADIUS CURVE TO THE RIGHT, THROUGH A CENTRAL ANGLE OF 27°13'20"AND A LONG CHORD BEARING SOUTH 89°02'51"EAST 281.33 FEET, MORE OR LESS;
 THENCE SOUTH 75°26'14"EAST 727.17 FEET, MORE OR LESS;
 THENCE NORTH 2°56'50"WEST 1529.45 FEET, MORE OR LESS;
 THENCE NORTH 20°58'16"WEST 731.98 FEET, MORE OR LESS;
 THENCE NORTH 20°58'14"WEST 931.40 FEET, MORE OR LESS;
 THENCE NORTH 20°58'11"WEST 172.60 FEET, MORE OR LESS;
 THENCE NORTH 80°34'35"EAST 968.63 FEET, MORE OR LESS, TO A POINT ON A CURVE;
 THENCE NORTHWESTERLY 134.46 FEET ALONG THE ARC OF A 348.84 FOOT RADIUS CURVE TO THE RIGHT, THROUGH A CENTRAL ANGLE OF 22°05'04"AND A LONG CHORD BEARING NORTH 17°34'09"WEST 133.63 FEET, MORE OR LESS;
 THENCE NORTH 6°31'37"WEST 264.17 FEET, MORE OR LESS, TO A POINT ON A CURVE;
 THENCE NORTHEASTERLY 142.73 FEET ALONG THE ARC OF A 498.12 FOOT RADIUS CURVE TO THE RIGHT, THROUGH A CENTRAL ANGLE OF 16°25'04"AND A LONG CHORD BEARING NORTH 1°40'54"EAST 142.25 FEET, MORE OR LESS;
 THENCE NORTH 9°53'26"EAST 464.27 FEET, MORE OR LESS TO A POINT ON A CURVE;
 THENCE NORTHEASTERLY 146.65 FEET ALONG THE ARC OF A 697.37 FOOT RADIUS CURVE TO THE RIGHT, THROUGH A CENTRAL ANGLE OF 12°02'55"AND A LONG CHORD BEARING NORTH 15°54'53"EAST 146.38 FEET, MORE OR LESS;
 THENCE NORTH 21°56'18"EAST 937.56 FEET, MORE OR LESS, TO A POINT ON A CURVE;
 THENCE NORTHEASTERLY 252.26 FEET ALONG THE ARC OF A 896.63 FOOT RADIUS CURVE TO THE RIGHT, THROUGH A CENTRAL ANGLE OF 16°07'11"AND A LONG CHORD BEARING NORTH 29°59'55"EAST 251.43 FEET, MORE OR LESS;
 THENCE NORTH 38°03'30"EAST 321.75 FEET, MORE OR LESS;
 THENCE NORTH 7°41'17"EAST 1333.43 FEET, MORE OR LESS;
 THENCE NORTH 0°12'51"WEST 1484.52 FEET, MORE OR LESS;
 THENCE NORTH 89°19'56"EAST 1284.45 FEET, MORE OR LESS;
 THENCE SOUTH 0°38'55"EAST 2497.36 FEET, MORE OR LESS;
 THENCE SOUTH 0°16'29"EAST 1149.29 FEET, MORE OR LESS;
 THENCE SOUTH 0°16'31"EAST 906.59 FEET, MORE OR LESS;
 THENCE SOUTH 0°16'23"EAST 862.75 FEET, MORE OR LESS;
 THENCE SOUTH 6°42'50"WEST 1606.89 FEET, MORE OR LESS;
 THENCE NORTH 76°30'11"WEST 99.63 FEET, MORE OR LESS, TO A POINT ON A CURVE;
 THENCE SOUTHWESTERLY 43.50 FEET ALONG THE ARC OF A 102.67 FOOT RADIUS CURVE TO THE RIGHT, THROUGH A CENTRAL ANGLE OF 24°16'31"AND A LONG CHORD BEARING SOUTH 26°00'04"WEST 43.17 FEET, MORE OR LESS;
 THENCE SOUTH 38°31'19"WEST 178.05 FEET, MORE OR LESS, TO A POINT ON A CURVE;
 THENCE SOUTHWESTERLY 137.71 FEET ALONG THE ARC OF A 498.06 FOOT RADIUS CURVE TO THE RIGHT, THROUGH A CENTRAL ANGLE OF 15°50'31"AND A LONG CHORD BEARING SOUTH 46°26'31"WEST 137.27 FEET, MORE OR LESS;

THENCE SOUTH 54°21'42"WEST 116.74 FEET, MORE OR LESS, TO A POINT ON A CURVE;
 THENCE SOUTHWESTERLY 150.32 FEET ALONG THE ARC OF A 502.64 FOOT RADIUS CURVE TO THE LEFT, THROUGH A CENTRAL ANGLE OF 17°08'04"AND A LONG CHORD BEARING SOUTH 45°47'44"WEST 149.76 FEET, MORE OR LESS TO A POINT OF REVERSE CURVATURE;
 THENCE SOUTHWESTERLY 175.50 FEET ALONG THE ARC OF A 231.73 FOOT RADIUS CURVE TO THE RIGHT, THROUGH A CENTRAL ANGLE OF 43°23'28"AND A LONG CHORD BEARING SOUTH 58°55'17"WEST 171.33 FEET, MORE OR LESS, TO A POINT OF REVERSE CURVATURE;
 THENCE SOUTHWESTERLY 382.91 FEET ALONG THE ARC OF A 251.96 FOOT RADIUS CURVE TO THE LEFT, THROUGH A CENTRAL ANGLE OF 87°04'29"AND A LONG CHORD BEARING SOUTH 45°42'43"WEST 347.11 FEET, MORE OR LESS;
 THENCE SOUTH 1°54'17"WEST 375.68 FEET, MORE OR LESS, TO A POINT ON A CURVE;
 THENCE SOUTHWESTERLY 144.86 FEET ALONG THE ARC OF A 498.15 FOOT RADIUS CURVE TO THE RIGHT, THROUGH A CENTRAL ANGLE OF 16°39'39"AND A LONG CHORD BEARING SOUTH 10°14'07"WEST 144.35 FEET, MORE OR LESS;
 THENCE SOUTH 18°34'00"WEST 214.59 FEET, MORE OR LESS, TO A POINT ON A CURVE;
 THENCE SOUTHWESTERLY 151.29 FEET ALONG THE ARC OF A 249.06 FOOT RADIUS CURVE TO THE LEFT, THROUGH A CENTRAL ANGLE OF 37°04'15"AND A LONG CHORD BEARING SOUTH 1°09'53"WEST 148.98 FEET, MORE OR LESS;
 THENCE SOUTH 16°14'24"EAST 251.10 FEET, MORE OR LESS;
 THENCE SOUTH 0°01'34"EAST 996.26 FEET, MORE OR LESS;
 THENCE NORTH 78°09'59"WEST 1717.08 FEET, MORE OR LESS;
 THENCE SOUTH 17°35'28"EAST 797.01 FEET, MORE OR LESS;
 THENCE SOUTH 0°00'43"EAST 670.24 FEET, MORE OR LESS;
 THENCE SOUTH 0°01'04"WEST 4749.96 FEET, MORE OR LESS;
 THENCE NORTH 43°41'20"EAST 1691.44 FEET, MORE OR LESS;
 THENCE NORTH 77°28'35"EAST 174.48 FEET, MORE OR LESS, TO A POINT ON A CURVE;
 THENCE NORTHEASTERLY 88.87 FEET ALONG THE ARC OF A 300.00 FOOT RADIUS CURVE TO THE RIGHT, THROUGH A CENTRAL ANGLE OF 16°58'24"AND A LONG CHORD BEARING NORTH 88°05'25"EAST 88.55 FEET, MORE OR LESS;
 THENCE SOUTH 83°25'23"EAST 483.66 FEET, MORE OR LESS, TO A POINT ON A CURVE;
 THENCE SOUTHEASTERLY 59.62 FEET ALONG THE ARC OF A 499.16 FOOT RADIUS CURVE TO THE RIGHT, THROUGH A CENTRAL ANGLE OF 6°50'39"AND A LONG CHORD BEARING SOUTH 80°00'14"EAST 59.59 FEET, MORE OR LESS;
 THENCE SOUTH 76°35'29"EAST 215.54 FEET, MORE OR LESS, TO A POINT ON A CURVE;
 THENCE SOUTHEASTERLY 150.23 FEET ALONG THE ARC OF A 200.00 FOOT RADIUS CURVE TO THE RIGHT, THROUGH A CENTRAL ANGLE OF 43°02'20"AND A LONG CHORD BEARING SOUTH 55°04'19"EAST 146.73 FEET, MORE OR LESS;
 THENCE SOUTH 33°33'09"EAST 177.34 FEET, MORE OR LESS, TO A POINT ON A CURVE;
 THENCE SOUTHEASTERLY 49.06 FEET ALONG THE ARC OF A 50.00 FOOT RADIUS CURVE TO THE LEFT, THROUGH A CENTRAL ANGLE OF 56°13'07"AND A LONG CHORD BEARING SOUTH 61°39'43"EAST 47.12 FEET, MORE OR LESS;
 THENCE SOUTH 89°46'16"EAST 245.23 FEET, MORE OR LESS, TO A POINT ON A CURVE;
 THENCE NORTHEASTERLY 45.50 FEET ALONG THE ARC OF A 400.00 FOOT RADIUS CURVE TO THE LEFT, THROUGH A CENTRAL ANGLE OF 6°31'02"AND A LONG CHORD BEARING NORTH 86°58'13"EAST 45.47 FEET, MORE OR LESS;
 THENCE NORTH 83°42'42"EAST 145.22 FEET, MORE OR LESS, TO A POINT ON A CURVE;
 THENCE SOUTHEASTERLY 330.09 FEET ALONG THE ARC OF A 400.00 FOOT RADIUS CURVE TO THE RIGHT, THROUGH A CENTRAL ANGLE OF 47°16'53"AND A LONG CHORD BEARING SOUTH 72°38'52"EAST 320.80 FEET, MORE OR LESS;
 THENCE SOUTH 49°00'25"EAST 85.96 FEET, MORE OR LESS, TO A POINT ON A CURVE;
 THENCE NORTHEASTERLY 148.63 FEET ALONG THE ARC OF A 100.00 FOOT RADIUS CURVE TO THE LEFT, THROUGH A CENTRAL ANGLE OF 85°09'23"AND A LONG CHORD BEARING NORTH 88°24'53"EAST 135.32 FEET, MORE OR LESS;

CONTINUED ON SHEET 2



BASIS OF BEARINGS

THE BASIS OF BEARING IS NORTH 89°07'31" EAST ALONG THE QUARTER SECTION LINE BETWEEN THE FOUND MONUMENTS AT THE NORTHWEST CORNER AND THE NORTH QUARTER CORNER OF SECTION 19, TOWNSHIP 2 SOUTH, RANGE 6 EAST, SALT LAKE BASE AND MERIDIAN AS SHOWN.

WEST HILLS INCORPORATION

LOCATED IN TOWNSHIP 2 SOUTH, RANGE 5 AND 6 EAST, SALT LAKE BASE & MERIDIAN

RECORDED
 ENTRY NUMBER: _____ BOOK _____ PAGE _____
 STATE OF UTAH, COUNTY OF SUMMIT, DATE: _____ TIME: _____
 RECORDED AND FILED AT THE REQUEST OF: _____



6891 South 700 West Ste. 150
 Midvale, Utah 84047
 Phone (801) 286-5099 Fax (801) 266-5032
 office@diamondlandsurveying.com
 www.diamondlandsurveying.com

SUMMIT COUNTY RECORDER

APPROVED THIS _____ DAY
 OF _____ OF 2024

 SUMMIT COUNTY RECORDER

SUMMIT COUNTY SURVEYOR

APPROVED THIS _____ DAY
 OF _____ OF 2024

 SUMMIT COUNTY SURVEYOR

COUNTY PLANNING COMMISSION

APPROVED THIS _____ DAY
 OF _____ OF 2024

 CHAIRMAN, SUMMIT COUNTY PLANNING COMMISSION

SUMMIT COUNTY ENGINEER

APPROVED THIS _____ DAY
 OF _____ OF 2024

 SUMMIT COUNTY ENGINEER

SUMMIT COUNTY MAYOR

APPROVED THIS _____ DAY
 OF _____ OF 2024

 SUMMIT COUNTY MAYOR

WEST HILLS INCORPORATION

A PART OF SECTIONS 2, 3, 10, 11, 12, 13, 14, 15, 22, 23 AND 24, TOWNSHIP
2 SOUTH, RANGE 5 EAST, AND A PART OF SECTIONS 18 AND 19,
TOWNSHIP 2 SOUTH, RANGE 6 EAST, SALT LAKE BASE AND MERIDIAN
SUMMIT COUNTY, UTAH
OCTOBER 2024

INCORPORATION DESCRIPTION

*** CONTINUED FROM SHEET 1 ***

THENCE NORTH 45°50'12"EAST 40.10 FEET, MORE OR LESS, TO A POINT ON A CURVE;
THENCE NORTHEASTERLY 117.32 FEET ALONG THE ARC OF A 399.61 FOOT RADIUS CURVE TO THE RIGHT, THROUGH A CENTRAL ANGLE OF 16°49'14" AND A LONG CHORD BEARING NORTH 54°14'09"EAST 116.90 FEET, MORE OR LESS;
THENCE NORTH 62°38'31"EAST 53.72 FEET, MORE OR LESS;
THENCE SOUTH 35°52'56"WEST 1452.42 FEET, MORE OR LESS;
THENCE SOUTH 89°45'44"WEST 708.14 FEET, MORE OR LESS;
THENCE SOUTH 0°05'42"EAST 1878.83 FEET, MORE OR LESS, TO A POINT ON A CURVE;
THENCE NORTHEASTERLY 1234.51 FEET ALONG THE ARC OF A 3615.22 FOOT RADIUS CURVE TO THE LEFT, THROUGH A CENTRAL ANGLE OF 19°33'54" AND A LONG CHORD BEARING NORTH 82°28'48"EAST 1228.52 FEET, MORE OR LESS;
THENCE NORTH 1°04'33"WEST 1721.46 FEET, MORE OR LESS;
THENCE NORTH 89°51'48"EAST 1354.80 FEET, MORE OR LESS;
THENCE NORTH 4°49'14"WEST 1405.32 FEET, MORE OR LESS;
THENCE SOUTH 40°18'31"EAST 148.78 FEET, MORE OR LESS, TO A POINT ON A CURVE;
THENCE SOUTHWESTERLY 150.25 FEET ALONG THE ARC OF A 99.26 FOOT RADIUS CURVE TO THE RIGHT, THROUGH A CENTRAL ANGLE OF 86°43'52" AND A LONG CHORD BEARING SOUTH 83°16'34"WEST 136.31 FEET, MORE OR LESS;
THENCE NORTH 53°41'17"WEST 465.71 FEET, MORE OR LESS;
THENCE NORTH 47°45'02"EAST 859.65 FEET, MORE OR LESS;
THENCE NORTH 43°50'58"WEST 1825.36 FEET, MORE OR LESS;
THENCE NORTH 49°23'10"WEST 2046.44 FEET, MORE OR LESS, TO A POINT ON A CURVE;
THENCE NORTHEASTERLY 664.74 FEET ALONG THE ARC OF A 702.18 FOOT RADIUS CURVE TO THE RIGHT, THROUGH A CENTRAL ANGLE OF 54°14'27" AND A LONG CHORD BEARING NORTH 63°11'48"EAST 640.19 FEET, MORE OR LESS;
THENCE NORTH 87°54'04"EAST 77.47 FEET, MORE OR LESS, TO A POINT ON A CURVE;
THENCE NORTHEASTERLY 106.82 FEET ALONG THE ARC OF A 172.77 FOOT RADIUS CURVE TO THE LEFT, THROUGH A CENTRAL ANGLE OF 35°25'28" AND A LONG CHORD BEARING NORTH 70°10'59"EAST 105.13 FEET, MORE OR LESS, TO A POINT OF REVERSE CURVATURE;
THENCE NORTHEASTERLY 145.76 FEET ALONG THE ARC OF A 305.95 FOOT RADIUS CURVE TO THE RIGHT, THROUGH A CENTRAL ANGLE OF 27°17'47" AND A LONG CHORD BEARING NORTH 58°30'55"EAST 144.38 FEET, MORE OR LESS;
THENCE NORTH 72°59'09"EAST 174.19 FEET, MORE OR LESS, TO A POINT ON A CURVE;
THENCE NORTHEASTERLY 97.94 FEET ALONG THE ARC OF A 207.12 FOOT RADIUS CURVE TO THE RIGHT, THROUGH A CENTRAL ANGLE OF 27°05'34" AND A LONG CHORD BEARING NORTH 87°04'41"EAST 97.03 FEET, MORE OR LESS;
THENCE NORTH 6°24'21"EAST 126.20 FEET, MORE OR LESS, TO A POINT ON A CURVE;
THENCE NORTHEASTERLY 16.07 FEET ALONG THE ARC OF A 104.04 FOOT RADIUS CURVE TO THE LEFT, THROUGH A CENTRAL ANGLE OF 8°51'00" AND A LONG CHORD BEARING NORTH 1°58'44"EAST 16.05 FEET, MORE OR LESS;
THENCE NORTH 2°26'50"WEST 219.54 FEET, MORE OR LESS, TO A POINT ON A CURVE;
THENCE NORTHWESTERLY 16.36 FEET ALONG THE ARC OF A 104.99 FOOT RADIUS CURVE TO THE LEFT, THROUGH A CENTRAL ANGLE OF 8°55'38" AND A LONG CHORD BEARING NORTH 6°54'38"WEST 16.34 FEET, MORE OR LESS;
THENCE NORTH 11°22'21"WEST 131.17 FEET, MORE OR LESS, TO A POINT ON A CURVE;
THENCE NORTHWESTERLY 126.93 FEET ALONG THE ARC OF A 199.23 FOOT RADIUS CURVE TO THE LEFT, THROUGH A CENTRAL ANGLE OF 36°30'19" AND A LONG CHORD BEARING NORTH 29°37'23"WEST 124.80 FEET, MORE OR LESS;
THENCE NORTH 53°08'11"EAST 1537.61 FEET, MORE OR LESS;
THENCE SOUTH 43°20'44"EAST 987.42 FEET, MORE OR LESS;
THENCE SOUTH 44°37'52"EAST 1418.53 FEET, MORE OR LESS, TO A POINT ON

A CURVE;
THENCE SOUTHWESTERLY 305.13 FEET ALONG THE ARC OF A 886.12 FOOT RADIUS CURVE TO THE RIGHT, THROUGH A CENTRAL ANGLE OF 19°43'46" AND A LONG CHORD BEARING SOUTH 18°06'18"WEST 303.63 FEET, MORE OR LESS;
THENCE SOUTH 27°51'11"WEST 197.76 FEET, MORE OR LESS, TO A POINT ON A CURVE;
THENCE SOUTHWESTERLY 146.51 FEET ALONG THE ARC OF A 302.90 FOOT RADIUS CURVE TO THE LEFT, THROUGH A CENTRAL ANGLE OF 27°42'50" AND A LONG CHORD BEARING SOUTH 13°59'46"WEST 145.09 FEET, MORE OR LESS, TO A POINT OF REVERSE CURVATURE;
THENCE SOUTHWESTERLY 90.42 FEET ALONG THE ARC OF A 199.27 FOOT RADIUS CURVE TO THE RIGHT, THROUGH A CENTRAL ANGLE OF 25°59'56" AND A LONG CHORD BEARING SOUTH 13°08'22"WEST 89.65 FEET, MORE OR LESS, TO A POINT OF REVERSE CURVATURE;
THENCE SOUTHWESTERLY 116.50 FEET ALONG THE ARC OF A 199.25 FOOT RADIUS CURVE TO THE LEFT, THROUGH A CENTRAL ANGLE OF 33°30'01" AND A LONG CHORD BEARING SOUTH 9°23'21"WEST 114.85 FEET, MORE OR LESS, TO A POINT OF REVERSE CURVATURE;
THENCE SOUTHWESTERLY 145.44 FEET ALONG THE ARC OF A 436.25 FOOT RADIUS CURVE TO THE RIGHT, THROUGH A CENTRAL ANGLE OF 19°06'07" AND A LONG CHORD BEARING SOUTH 2°11'23"WEST 144.77 FEET, MORE OR LESS, TO A POINT OF REVERSE CURVATURE;
THENCE SOUTHWESTERLY 111.37 FEET ALONG THE ARC OF A 195.71 FOOT RADIUS CURVE TO THE LEFT, THROUGH A CENTRAL ANGLE OF 32°36'11" AND A LONG CHORD BEARING SOUTH 3°42'12"WEST 109.87 FEET, MORE OR LESS, TO A POINT OF REVERSE CURVATURE;
THENCE SOUTHWESTERLY 143.25 FEET ALONG THE ARC OF A 318.40 FOOT RADIUS CURVE TO THE RIGHT, THROUGH A CENTRAL ANGLE OF 25°46'39" AND A LONG CHORD BEARING SOUTH 7°56'24"WEST 142.04 FEET, MORE OR LESS;
THENCE SOUTH 20°49'54"WEST 175.42 FEET, MORE OR LESS, TO A POINT ON A CURVE;
THENCE SOUTHWESTERLY 65.37 FEET ALONG THE ARC OF A 169.00 FOOT RADIUS CURVE TO THE LEFT, THROUGH A CENTRAL ANGLE OF 22°09'50" AND A LONG CHORD BEARING SOUTH 9°45'03"WEST 64.97 FEET, MORE OR LESS, TO A POINT OF REVERSE CURVATURE;
THENCE SOUTHWESTERLY 76.42 FEET ALONG THE ARC OF A 376.70 FOOT RADIUS CURVE TO THE RIGHT, THROUGH A CENTRAL ANGLE OF 11°37'26" AND A LONG CHORD BEARING SOUTH 4°28'50"WEST 76.29 FEET, MORE OR LESS;
THENCE SOUTH 10°17'30"WEST 478.98 FEET, MORE OR LESS, TO A POINT ON A CURVE;
THENCE SOUTHWESTERLY 177.98 FEET ALONG THE ARC OF A 199.22 FOOT RADIUS CURVE TO THE RIGHT, THROUGH A CENTRAL ANGLE OF 51°11'18" AND A LONG CHORD BEARING SOUTH 35°52'53"WEST 172.12 FEET, MORE OR LESS;
THENCE SOUTH 61°28'14"WEST 42.53 FEET, MORE OR LESS;
THENCE SOUTH 28°21'48"EAST 221.43 FEET, MORE OR LESS, TO A POINT ON A CURVE;
THENCE SOUTHEASTERLY 258.90 FEET ALONG THE ARC OF A 260.47 FOOT RADIUS CURVE TO THE LEFT, THROUGH A CENTRAL ANGLE OF 56°56'59" AND A LONG CHORD BEARING SOUTH 57°00'16"EAST 248.37 FEET, MORE OR LESS, TO A POINT OF REVERSE CURVATURE;
THENCE SOUTHEASTERLY 277.85 FEET ALONG THE ARC OF A 622.54 FOOT RADIUS CURVE TO THE RIGHT, THROUGH A CENTRAL ANGLE OF 25°34'19" AND A LONG CHORD BEARING SOUTH 72°41'35"EAST 275.55 FEET, MORE OR LESS;
THENCE SOUTH 59°54'23"EAST 418.72 FEET, MORE OR LESS;
THENCE NORTH 28°35'35"EAST 1618.40 FEET, MORE OR LESS;
THENCE NORTH 89°58'36"EAST 1047.71 FEET, MORE OR LESS;
THENCE NORTH 13°14'52"WEST 715.70 FEET, MORE OR LESS;
THENCE NORTH 83°41'32"WEST 943.26 FEET, MORE OR LESS;
THENCE NORTH 3°06'47"EAST 1945.78 FEET, MORE OR LESS;
THENCE SOUTH 36°50'29"WEST 276.35 FEET, MORE OR LESS, TO A POINT ON A CURVE;
THENCE SOUTHWESTERLY 347.89 FEET ALONG THE ARC OF A 234.11 FOOT RADIUS CURVE TO THE RIGHT, THROUGH A CENTRAL ANGLE OF 85°08'32" AND A LONG CHORD BEARING SOUTH 79°24'37"WEST 316.75 FEET, MORE OR LESS;
THENCE NORTH 2°13'55"EAST 1869.56 FEET, MORE OR LESS;
THENCE SOUTH 89°51'16"EAST 4087.57 FEET, MORE OR LESS;

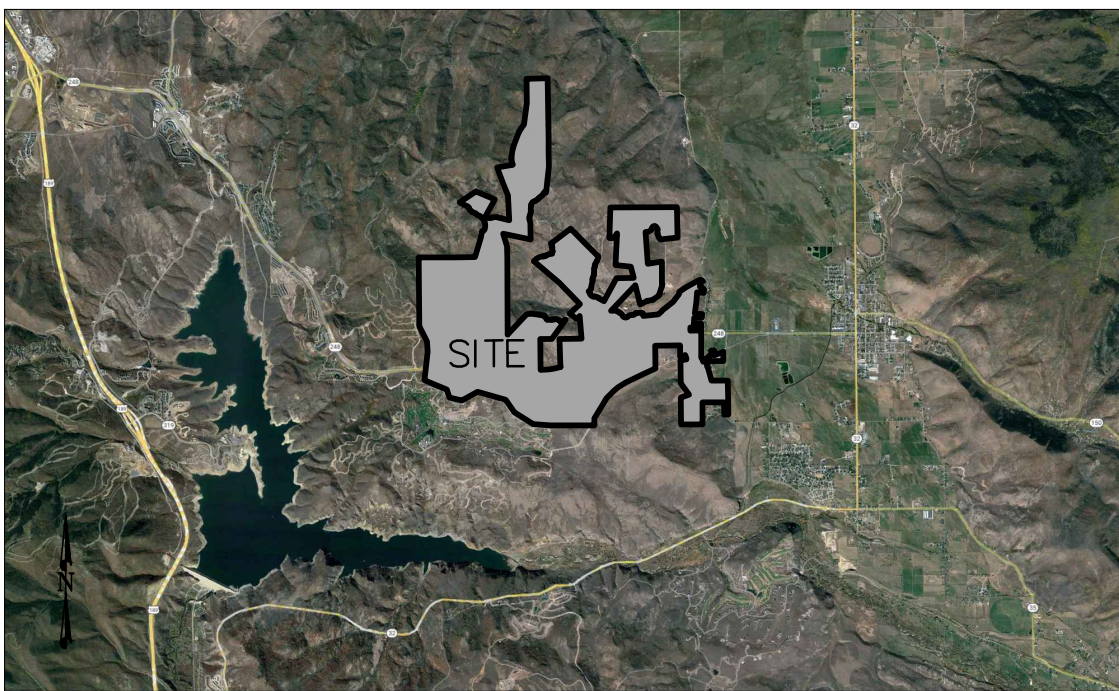
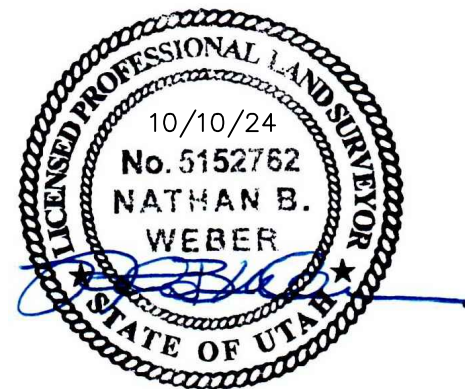
THENCE SOUTH 0°46'21"EAST 1867.93 FEET, MORE OR LESS;
THENCE SOUTH 83°57'59"WEST 1068.68 FEET, MORE OR LESS;
THENCE NORTH 33°47'43"WEST 182.35 FEET, MORE OR LESS, TO A POINT ON A CURVE;
THENCE NORTHWESTERLY 229.52 FEET ALONG THE ARC OF A 398.48 FOOT RADIUS CURVE TO THE RIGHT, THROUGH A CENTRAL ANGLE OF 32°59'50" AND A LONG CHORD BEARING NORTH 17°17'44"WEST 226.36 FEET, MORE OR LESS;
THENCE NORTH 0°47'42"WEST 220.68 FEET, MORE OR LESS, TO A POINT ON A CURVE;
THENCE NORTHWESTERLY 282.19 FEET ALONG THE ARC OF A 243.09 FOOT RADIUS CURVE TO THE LEFT, THROUGH A CENTRAL ANGLE OF 66°30'33" AND A LONG CHORD BEARING NORTH 34°02'42"WEST 266.61 FEET, MORE OR LESS, TO A POINT ON A COMPOUND CURVE;
THENCE SOUTHWESTERLY 218.84 FEET ALONG THE ARC OF A 125.38 FOOT RADIUS CURVE TO THE LEFT, THROUGH A CENTRAL ANGLE OF 100°00'12" AND A LONG CHORD BEARING SOUTH 62°42'07"WEST 192.10 FEET, MORE OR LESS, TO A POINT OF REVERSE CURVATURE;
THENCE SOUTHWESTERLY 107.19 FEET ALONG THE ARC OF A 228.46 FOOT RADIUS CURVE TO THE RIGHT, THROUGH A CENTRAL ANGLE OF 26°52'58" AND A LONG CHORD BEARING SOUTH 26°56'56"WEST 106.21 FEET, MORE OR LESS, TO A POINT ON A COMPOUND CURVE;
THENCE SOUTHWESTERLY 403.03 FEET ALONG THE ARC OF A 481.16 FOOT RADIUS CURVE TO THE RIGHT, THROUGH A CENTRAL ANGLE OF 47°59'32" AND A LONG CHORD BEARING SOUTH 65°12'17"WEST 391.35 FEET, MORE OR LESS;
THENCE SOUTH 3°22'49"EAST 1949.45 FEET, MORE OR LESS;
THENCE NORTH 81°08'21"EAST 873.67 FEET, MORE OR LESS;
THENCE SOUTH 0°47'42"EAST 334.17 FEET, MORE OR LESS;
THENCE SOUTH 0°28'24"WEST 1049.42 FEET, MORE OR LESS, TO A POINT ON A CURVE;
THENCE SOUTHWESTERLY 183.71 FEET ALONG THE ARC OF A 597.75 FOOT RADIUS CURVE TO THE RIGHT, THROUGH A CENTRAL ANGLE OF 17°36'33" AND A LONG CHORD BEARING SOUTH 8°00'35"WEST 182.99 FEET, MORE OR LESS;
THENCE SOUTH 16°48'51"WEST 446.96 FEET, MORE OR LESS, TO A POINT ON A CURVE;
THENCE SOUTHWESTERLY 128.67 FEET ALONG THE ARC OF A 199.29 FOOT RADIUS CURVE TO THE RIGHT, THROUGH A CENTRAL ANGLE OF 36°59'32" AND A LONG CHORD BEARING SOUTH 35°18'53"WEST 126.44 FEET, MORE OR LESS;
THENCE SOUTH 53°48'51"WEST 366.71 FEET, MORE OR LESS, TO A POINT ON A CURVE;
THENCE SOUTHWESTERLY 86.94 FEET ALONG THE ARC OF A 199.23 FOOT RADIUS CURVE TO THE RIGHT, THROUGH A CENTRAL ANGLE OF 25°00'16" AND A LONG CHORD BEARING SOUTH 66°18'50"WEST 86.26 FEET, MORE OR LESS;
THENCE SOUTH 78°48'51"WEST 284.24 FEET, MORE OR LESS, TO A POINT ON A CURVE;
THENCE SOUTHWESTERLY 61.87 FEET ALONG THE ARC OF A 249.09 FOOT RADIUS CURVE TO THE LEFT, THROUGH A CENTRAL ANGLE OF 141°35'11" AND A LONG CHORD BEARING SOUTH 71°41'56"WEST 61.71 FEET, MORE OR LESS;
THENCE SOUTH 64°34'57"WEST 450.19 FEET, MORE OR LESS;
THENCE NORTH 13°14'52"WEST 1219.52 FEET, MORE OR LESS;
THENCE SOUTH 43°41'35"WEST 2173.34 FEET, MORE OR LESS;
THENCE NORTH 87°10'16"EAST 240.98 FEET, MORE OR LESS, TO A POINT ON A CURVE;
THENCE SOUTHEASTERLY 157.08 FEET ALONG THE ARC OF A 250.00 FOOT RADIUS CURVE TO THE RIGHT, THROUGH A CENTRAL ANGLE OF 36°00'00" AND A LONG CHORD BEARING SOUTH 73°47'14"EAST 154.51 FEET, MORE OR LESS;
THENCE SOUTH 55°47'14"EAST 200.00 FEET, MORE OR LESS, TO A POINT ON A CURVE;
THENCE SOUTHEASTERLY 231.26 FEET ALONG THE ARC OF A 500.00 FOOT RADIUS CURVE TO THE RIGHT, THROUGH A CENTRAL ANGLE OF 26°30'02" AND A LONG CHORD BEARING SOUTH 42°32'14"EAST 229.20 FEET, MORE OR LESS, TO A POINT OF REVERSE CURVATURE;
THENCE SOUTHEASTERLY 349.07 FEET ALONG THE ARC OF A 200.00 FOOT RADIUS CURVE TO THE LEFT, THROUGH A CENTRAL ANGLE OF 100°00'01" AND A LONG CHORD BEARING SOUTH 79°17'14"EAST 306.42 FEET, MORE OR LESS, TO A POINT OF REVERSE CURVATURE;
THENCE NORTHEASTERLY 296.71 FEET ALONG THE ARC OF A 500.00 FOOT

RADIUS CURVE TO THE RIGHT, THROUGH A CENTRAL ANGLE OF 34°00'02" AND A LONG CHORD BEARING NORTH 67°42'45"EAST 292.38 FEET, MORE OR LESS;
THENCE NORTH 84°42'46"EAST 89.77 FEET, MORE OR LESS, TO A POINT ON A CURVE;
THENCE NORTHEASTERLY 111.09 FEET ALONG THE ARC OF A 115.81 FOOT RADIUS CURVE TO THE LEFT, THROUGH A CENTRAL ANGLE OF 54°57'38" AND A LONG CHORD BEARING NORTH 57°14'06"EAST 106.88 FEET, MORE OR LESS, TO A POINT OF REVERSE CURVATURE;
THENCE NORTHEASTERLY 110.24 FEET ALONG THE ARC OF A 110.16 FOOT RADIUS CURVE TO THE RIGHT, THROUGH A CENTRAL ANGLE OF 57°20'15" AND A LONG CHORD BEARING NORTH 58°25'32"EAST 105.70 FEET, MORE OR LESS;
THENCE NORTH 87°11'06"EAST 241.41 FEET, MORE OR LESS, TO A POINT ON A CURVE;
THENCE SOUTHEASTERLY 171.66 FEET ALONG THE ARC OF A 200.00 FOOT RADIUS CURVE TO THE RIGHT, THROUGH A CENTRAL ANGLE OF 49°10'39" AND A LONG CHORD BEARING SOUTH 68°19'36"EAST 166.44 FEET, MORE OR LESS;
THENCE SOUTH 11°57'42"EAST 146.72 FEET, MORE OR LESS;
THENCE NORTH 84°16'14"EAST 927.81 FEET, MORE OR LESS;
THENCE NORTH 46°04'33"EAST 265.68 FEET, MORE OR LESS;
THENCE NORTH 49°08'14"EAST 68.93 FEET, MORE OR LESS;
THENCE NORTH 51°05'57"EAST 864.62 FEET, MORE OR LESS;
THENCE NORTH 37°43'05"EAST 275.27 FEET, MORE OR LESS;
THENCE NORTH 36°52'48"EAST 251.10 FEET, MORE OR LESS;
THENCE NORTH 31°35'57"EAST 104.32 FEET, MORE OR LESS, TO THE POINT OF BEGINNING.

CONTAINS 158,356,459 SQ. FT. OR 3635.364 ACRES

SURVEYOR'S CERTIFICATE

I, NATHAN B. WEBER, DO HEREBY CERTIFY THAT I AM A PROFESSIONAL LAND SURVEYOR AND THAT I HOLD LICENSE CERTIFICATE NUMBER 5152762 AS PRESCRIBED UNDER THE LAWS OF THE STATE OF UTAH. I FURTHER CERTIFY THAT BY AUTHORITY OF THE OWNERS, I HAVE MADE A SURVEY OF THE PARCEL OF LAND SHOWN ON THIS PLAT TO BE INCORPORATED AS WEST HILLS, SUMMIT COUNTY, UTAH.



VICINITY MAP
NOT TO SCALE

NARRATIVE:

THE PURPOSE OF THIS SURVEY IS TO DELINEATE THE BOUNDARY OF INCORPORATED WEST HILLS, UTAH. THIS SURVEY IS A COMBINATION OF MEASURED, RECORD AND ESTABLISHED COURSES WHICH IN THE AGGREGATE CONSTITUTE THE ENTIRE BOUNDARY AS SHOWN HEREON. ON THIS SURVEY, THE PRECISION OF BEARINGS ARE INDICATED TO SECONDS OF ARC AND DISTANCES TO HUNDREDTHS OF A FOOT YET BOTH REMAIN SUBSERVIENT TO THE WRITTEN INTENT AS EXPRESSED HEREON.

SHEET 2 OF 7

BASIS OF BEARINGS
THE BASIS OF BEARING IS NORTH 89°07'31" EAST ALONG THE QUARTER SECTION LINE BETWEEN THE FOUND MONUMENTS AT THE NORTHWEST CORNER AND THE NORTH QUARTER CORNER OF SECTION 19, TOWNSHIP 2 SOUTH, RANGE 6 EAST, SALT LAKE BASE AND MERIDIAN AS SHOWN.

WEST HILLS INCORPORATION

LOCATED IN TOWNSHIP 2 SOUTH, RANGE 5 AND 6 EAST,
SALT LAKE BASE & MERIDIAN

RECORDED
ENTRY NUMBER: _____ BOOK _____ PAGE _____
STATE OF UTAH, COUNTY OF SUMMIT, DATE: _____ TIME: _____
RECORDED AND FILED AT THE REQUEST OF: _____



6891 South 700 West Ste. 150
Midvale, Utah 84047
Phone (801) 266-5099 Fax (801) 266-5032
office@diamondlandsurveying.com
www.diamondlandsurveying.com

SUMMIT COUNTY RECORDER

APPROVED THIS _____ DAY
OF _____ OF 2024

SUMMIT COUNTY RECORDER

SUMMIT COUNTY SURVEYOR

APPROVED THIS _____ DAY
OF _____ OF 2024

SUMMIT COUNTY SURVEYOR

COUNTY PLANNING COMMISSION

APPROVED THIS _____ DAY
OF _____ OF 2024

CHAIRMAN, SUMMIT COUNTY PLANNING COMMISSION

SUMMIT COUNTY ENGINEER

APPROVED THIS _____ DAY
OF _____ OF 2024

SUMMIT COUNTY ENGINEER

SUMMIT COUNTY MAYOR

APPROVED THIS _____ DAY
OF _____ OF 2024

SUMMIT COUNTY MAYOR

WEST HILLS INCORPORATION
A PART OF SECTIONS 2, 3, 10, 11, 12, 13, 14, 15, 22, 23 AND 24, TOWNSHIP
2 SOUTH, RANGE 5 EAST, AND A PART OF SECTIONS 18 AND 19,
TOWNSHIP 2 SOUTH, RANGE 6 EAST, SALT LAKE BASE AND MERIDIAN
SUMMIT COUNTY, UTAH
OCTOBER 2024

Curve #	Length	Radius	Delta	Chord	Chord Length
C1	110.90'	775.28'	8°11'46"	N 79°24'03" E	110.81'
C2	97.55'	766.62'	7°17'26"	N 71°38'03" E	97.48'
C3	265.89'	720.05'	21°09'28"	N 17°09'56" W	264.39'
C4	181.39'	194.85'	53°20'16"	N 48°51'05" E	174.91'
C5	499.87'	654.02'	43°47'31"	N 0°19'20" W	487.80'
C6	246.15'	653.93'	21°34'00"	N 32°30'20" W	244.69'
C7	167.79'	271.21'	35°26'54"	N 65°38'34" W	165.13'
C8	177.37'	249.06'	40°48'13"	N 48°59'46" W	173.65'
C9	188.90'	298.88'	36°12'47"	N 46°35'57" W	185.77'
C10	208.66'	298.86'	40°00'07"	S 82°39'30" E	204.44'
C11	283.99'	597.73'	27°13'20"	S 89°02'51" E	281.33'
C12	134.46'	348.84'	22°05'04"	N 17°34'09" W	133.63'
C13	142.73'	498.12'	16°25'04"	N 1°40'54" E	142.25'
C14	146.65'	697.37'	12°02'55"	N 15°54'53" E	146.38'
C15	252.26'	896.63'	16°07'11"	N 29°59'55" E	251.43'
C16	43.50'	102.67'	24°16'31"	S 26°00'04" W	43.17'
C17	137.71'	498.06'	15°50'31"	S 46°26'31" W	137.27'
C18	150.32'	502.64'	17°08'04"	S 45°47'44" W	149.76'
C19	175.50'	231.73'	43°23'28"	S 58°55'17" W	171.33'
C20	382.91'	251.96'	87°04'29"	S 45°42'43" W	347.11'
C21	144.86'	498.15'	16°39'39"	S 10°14'07" W	144.35'
C22	151.29'	249.06'	34°48'15"	S 1°09'53" W	148.98'
C23	88.87'	300.00'	16°58'24"	N 88°05'25" E	88.55'
C24	59.62'	499.16'	6°50'39"	S 80°00'14" E	59.59'
C25	150.23'	200.00'	43°02'20"	S 55°04'19" E	146.73'
C26	49.06'	50.00'	56°13'07"	S 61°39'43" E	47.12'
C27	45.50'	400.00'	6°31'02"	N 86°58'13" E	45.47'
C28	330.09'	400.00'	47°16'53"	S 72°38'52" E	320.80'
C29	148.63'	100.00'	85°09'23"	N 88°24'53" E	135.32'
C30	117.32'	399.61'	16°49'14"	N 54°14'09" E	116.90'
C31	1234.51'	3615.22'	19°33'54"	N 82°28'48" E	1228.52'
C32	150.25'	99.26'	86°43'52"	S 83°16'34" W	136.31'
C33	664.74'	702.18'	54°14'27"	N 63°11'48" E	640.19'
C34	106.82'	172.77'	35°25'28"	N 70°10'59" E	105.13'

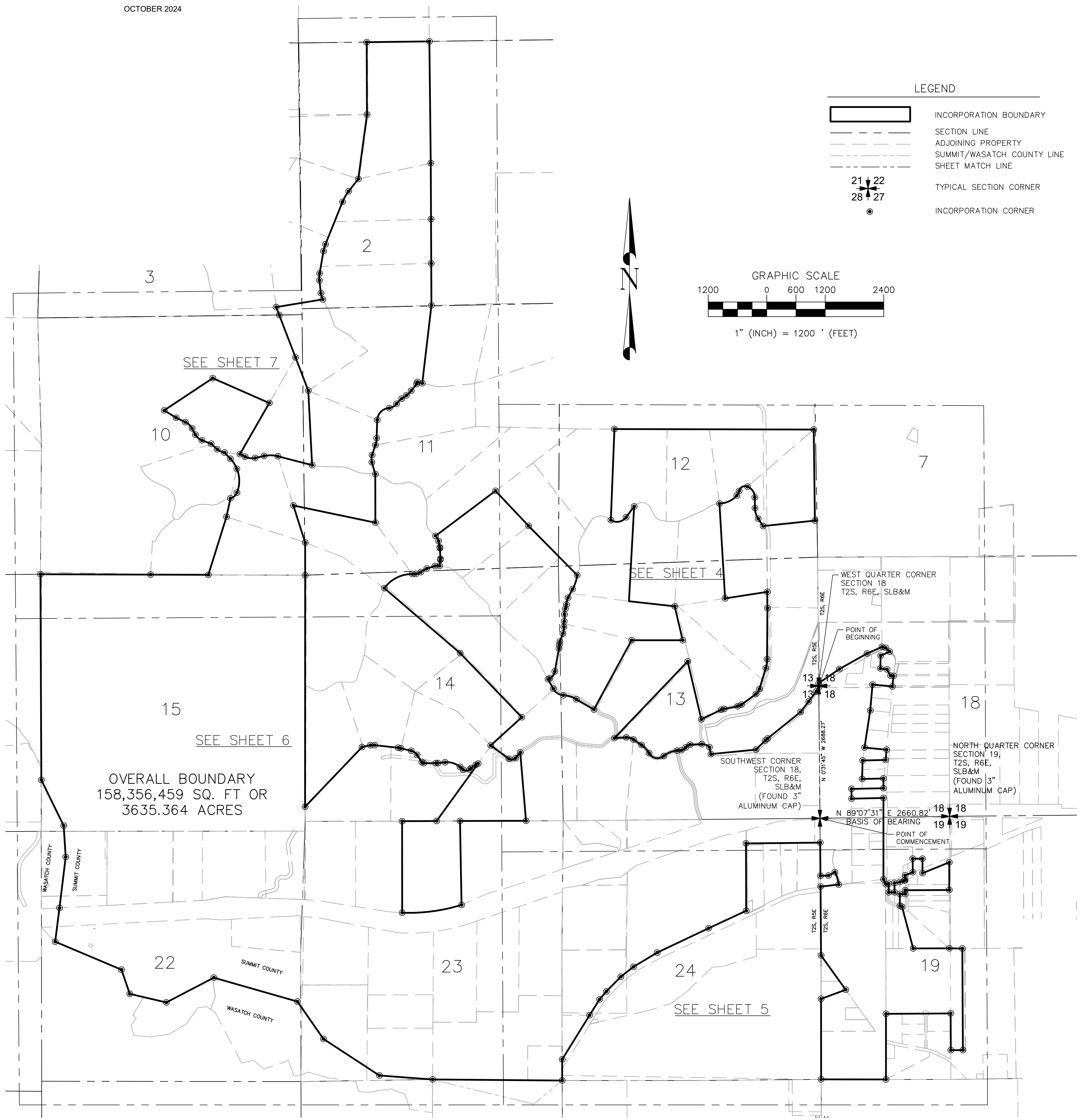
Curve #	Length	Radius	Delta	Chord	Chord Length
C35	145.76'	305.95'	27°17'47"	N 58°30'55" E	144.38'
C36	97.94'	207.12'	27°05'34"	N 87°04'41" E	97.03'
C37	16.07'	104.04'	8°51'00"	N 1°58'44" E	16.05'
C38	16.36'	104.99'	8°55'38"	N 6°54'38" W	16.34'
C39	126.93'	199.23'	36°30'19"	N 29°37'23" W	124.80'
C40	305.13'	886.12'	19°43'46"	S 18°06'18" W	303.63'
C41	146.51'	302.90'	27°42'50"	S 13°59'46" W	145.09'
C42	90.42'	199.27'	25°59'56"	S 13°08'22" W	89.65'
C43	116.50'	199.25'	33°30'01"	S 9°23'21" W	114.85'
C44	145.44'	436.25'	19°06'07"	S 2°11'23" W	144.77'
C45	111.37'	195.71'	32°36'11"	S 3°42'12" W	109.87'
C46	143.25'	318.40'	25°46'39"	S 7°56'24" W	142.04'
C47	65.37'	169.00'	22°09'50"	S 9°45'03" W	64.97'
C48	76.42'	376.70'	11°37'26"	S 4°28'50" W	76.29'
C49	177.98'	199.22'	51°11'18"	S 35°52'53" W	172.12'
C50	258.90'	260.47'	56°56'59"	S 57°00'16" E	248.37'
C51	277.85'	622.54'	25°34'19"	S 72°41'35" E	275.55'
C52	347.89'	234.11'	85°08'32"	S 79°24'37" W	316.75'
C53	229.52'	398.53'	32°59'50"	N 17°17'44" W	226.36'
C54	282.19'	243.09'	66°30'33"	N 34°02'42" W	266.61'
C55	218.84'	125.38'	100°00'12"	S 62°42'07" W	192.10'
C56	107.19'	228.46'	26°52'58"	S 26°56'56" W	106.21'
C57	403.03'	481.16'	47°59'32"	S 65°12'17" W	391.35'
C58	183.71'	597.75'	17°36'33"	S 8°00'35" W	182.99'
C59	128.67'	199.29'	36°59'32"	S 35°18'53" W	126.44'
C60	86.94'	199.23'	25°00'16"	S 66°18'50" W	86.26'
C61	61.87'	249.09'	14°31'51"	S 71°41'56" W	61.71'
C62	157.08'	250.00'	36°00'00"	S 73°71'14" E	154.51'
C63	231.26'	500.00'	26°30'02"	S 42°32'14" E	229.20'
C64	349.07'	200.00'	100°00'01"	S 79°17'14" E	306.42'
C65	296.71'	500.00'	34°00'02"	N 67°42'45" E	292.38'
C66	111.09'	115.81'	54°57'38"	N 57°14'06" E	106.88'
C67	110.24'	110.16'	57°20'15"	N 58°25'32" E	105.70'
C68	171.66'	200.00'	49°10'39"	S 68°19'36" E	166.44'

Line #	Length	Direction
L1	84.26'	N 0°30'54" W
L2	511.09'	N 55°35'53" E
L3	653.52'	N 60°41'24" E
L4	334.65'	N 66°00'21" E
L5	79.87'	S 73°19'25" E
L6	110.00'	S 47°06'07" E
L7	202.51'	S 66°01'57" W
L8	263.71'	S 11°8'13" W
L9	137.39'	S 82°14'38" E
L10	147.00'	S 29°17'23" E
L11	63.87'	S 81°55'00" E
L12	215.19'	S 6°51'56" W
L13	407.31'	N 84°32'56" W
L14	534.74'	S 51°01'11" W
L15	454.75'	S 84°32'56" E
L16	211.01'	S 51°01'19" W
L17	474.16'	S 88°45'18" W
L18	380.30'	S 1°20'10" W
L19	437.09'	N 88°45'18" E
L20	199.03'	S 0°01'46" E
L21	654.81'	S 88°45'16" W
L22	199.49'	S 0°22'19" E
L23	653.62'	N 88°45'18" E
L24	108.59'	S 26°34'04" E
L25	60.42'	N 82°57'02" E
L26	178.01'	S 0°15'02" E
L27	118.00'	N 89°44'58" E
L28	192.08'	N 0°15'02" W
L29	17.70'	N 67°59'20" E
L30	97.70'	N 0°15'02" W
L31	169.61'	N 67°48'05" E

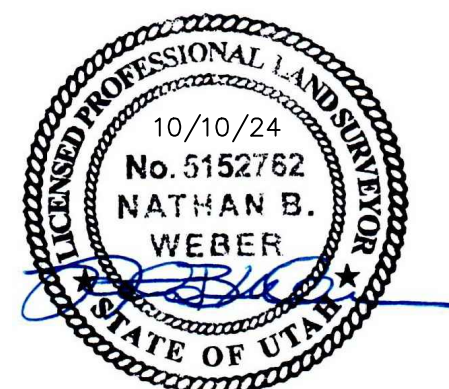
Line #	Length	Direction
L32	277.58'	N 0°10'33" W
L33	200.00'	N 89°44'58" E
L34	295.90'	S 0°15'02" E
L35	591.46'	N 67°59'20" E
L36	567.08'	S 0°01'10" E
L37	78.43'	S 0°15'02" E
L38	109.09'	S 89°44'58" W
L39	240.09'	S 0°15'02" E
L40	50.45'	S 62°14'42" E
L41	740.00'	N 89°54'03" E
L42	267.59'	S 89°07'00" E
L43	248.43'	S 89°58'37" W
L44	537.95'	N 69°55'47" E
L45	372.01'	N 83°24'53" E
L46	146.49'	S 62°15'20" W
L47	163.79'	S 88°30'02" W
L48	568.71'	S 59°06'52" W
L49	328.05'	S 51°51'52" W
L50	422.37'	S 44°35'36" W
L51	215.53'	S 40°41'58" W
L52	384.16'	S 32°05'28" W
L53	435.23'	S 0°00'53" W
L54	14.49'	S 89°03'47" W
L55	524.54'	N 18°51'18" W
L56	697.45'	N 7°17'36" E
L57	643.73'	N 3°37'21" W
L58	389.38'	N 12°04'43" E
L59	177.51'	N 43°17'16" W
L60	166.00'	N 47°55'00" W
L61	203.24'	N 69°23'54" W
L62	149.53'	N 28°29'34" W

Line #	Length	Direction
L63	211.23'	N 64°42'18" W
L64	286.09'	N 58°17'56" W
L65	119.55'	S 62°39'31" E
L66	190.10'	N 77°20'30" E
L67	931.40'	N 20°58'14" W
L68	172.60'	N 20°58'11" W
L69	264.17'	N 6°31'37" W
L70	464.27'	N 9°53'26" E
L71	321.75'	N 38°03'30" E
L72	99.63'	N 76°30'11" W
L73	178.05'	S 38°31'19" W
L74	116.74'	S 54°21'42" W
L75	375.68'	S 1°54'17" W
L76	214.59'	S 18°34'00" W
L77	251.10'	S 16°14'24" E
L78	797.01'	S 17°35'28" E
L79	670.24'	S 0°00'43" E
L80	174.48'	N 77°28'35" E
L81	483.66'	S 83°25'23" E
L82	215.54'	S 76°35'29" E
L83	177.34'	S 33°33'09" E
L84	245.23'	S 89°46'16" E
L85	145.22'	N 83°42'42" E
L86	85.96'	S 49°00'25" E
L87	40.10'	N 45°50'12" E
L88	53.72'	N 62°38'31" E
L89	148.78'	S 40°18'31" W
L90	465.71'	N 53°41'17" W
L91	77.47'	N 87°54'04" E
L92	174.19'	N 72°59'09" E
L93	126.20'	N 6°24'21" E

Line #	Length	Direction
L94	219.54'	N 2°26'50" W
L95	131.17'	N 11°22'21" W
L96	197.76'	S 27°51'11" W
L97	175.42'	S 20°49'54" W
L98	478.98'	S 10°17'30" W
L99	42.53'	S 61°28'14" W
L100	221.43'	S 28°21'48" E
L101	418.72'	S 59°54'23" E
L102	715.70'	N 13°14'52" W
L103	276.35'	S 36°50'29" W
L104	182.35'	N 33°47'43" W
L105	220.68'	N 0°47'42" W
L106	334.17'	S 0°47'42" E
L107	446.96'	S 16°48'51" W
L108	366.71'	S 53°48'51" W
L109	284.24'	S 78°48'51" W
L110	450.19'	S 64°34'57" W
L111	240.98'	N 87°10'16" E
L112	200.00'	S 55°47'14" E
L113	89.77'	N 84°42'46" E
L114	241.41'	N 87°11'06" E
L115	146.72'	S 11°57'42" E
L116	265.68'	N 46°04'33" E
L117	68.93'	N 49°08'14" E
L118	864.62'	N 51°05'57" E
L119	275.27'	N 37°43'05" E
L120	251.10'	N 36°52'48" E
L121	104.32'	N 31°35'57" E



SHEET 3 OF 7



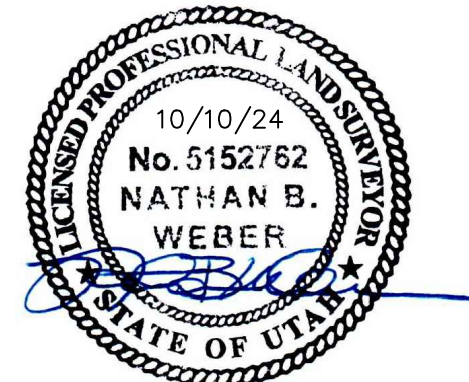
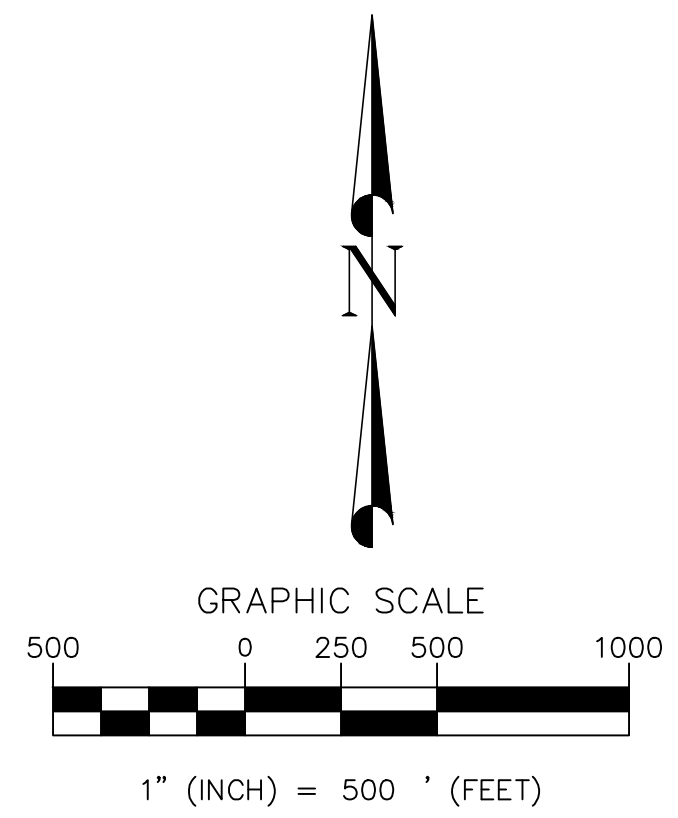
DIAMOND LAND SURVEYING
6891 South 700 West Ste. 150
Midvale, Utah 84047
Phone (801) 266-5099 Fax (801) 266-5032
office@diamondlandsurveying.com
www.diamondlandsurveying.com

WEST HILLS INCORPORATION

LOCATED IN TOWNSHIP 2 SOUTH, RANGE 5 AND 6 EAST,
SALT LAKE BASE & MERIDIAN

RECORDED _____
ENTRY NUMBER: _____ BOOK _____ PAGE _____
STATE OF UTAH, COUNTY OF SUMMIT, DATE: _____ TIME: _____
RECORDED AND FILED AT THE REQUEST OF: _____

WEST HILLS INCORPORATION
 A PART OF SECTIONS 2, 3, 10, 11, 12, 13, 14, 15, 22, 23 AND 24, TOWNSHIP
 2 SOUTH, RANGE 5 EAST, AND A PART OF SECTIONS 18 AND 19,
 TOWNSHIP 2 SOUTH, RANGE 6 EAST, SALT LAKE BASE AND MERIDIAN
 SUMMIT COUNTY, UTAH
 OCTOBER 2024



LEGEND

	INCORPORATION BOUNDARY
	SECTION LINE
	ADJOINING PROPERTY
	SUMMIT/WASATCH COUNTY LINE
	SHEET MATCH LINE
	INCORPORATION CORNER

SHEET 4 OF 7

DIAMOND LAND SURVEYING
 6891 South 700 West Ste. 150
 Midvale, Utah 84047
 Phone (801) 266-5099 Fax (801) 266-5032
 office@diamondlandsurveying.com
 www.diamondlandsurveying.com

WEST HILLS INCORPORATION

LOCATED IN TOWNSHIP 2 SOUTH, RANGE 5 AND 6 EAST,
 SALT LAKE BASE & MERIDIAN

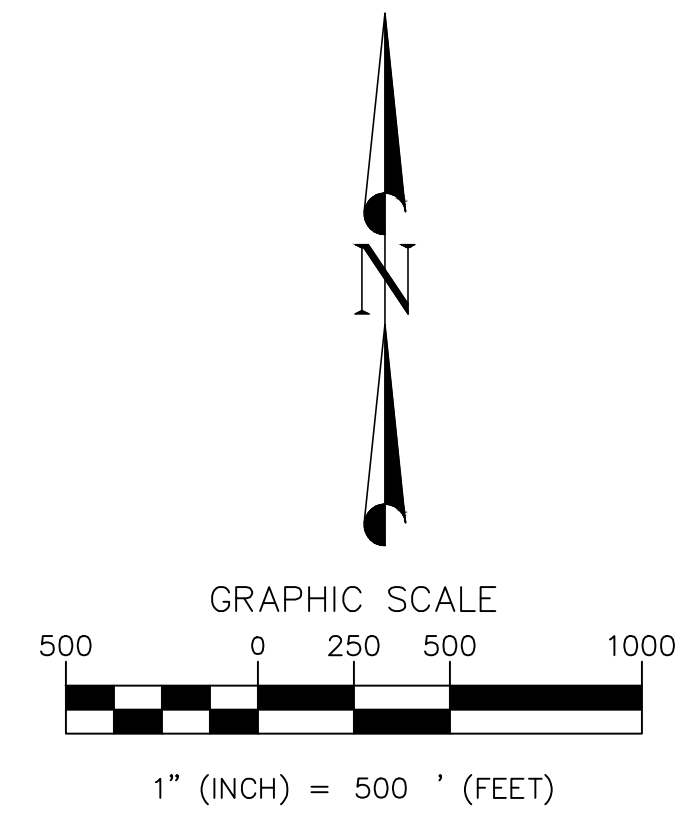
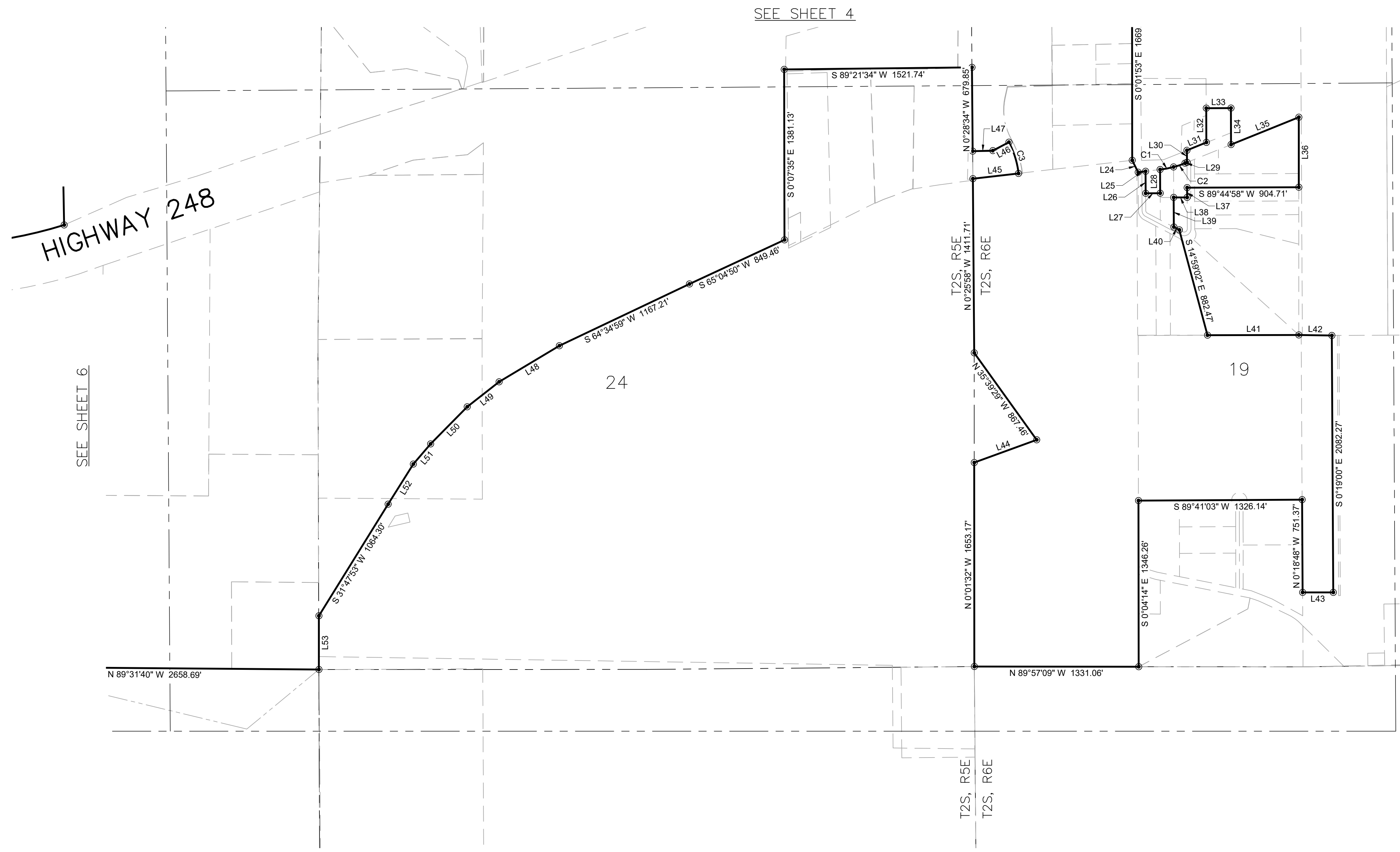
RECORDED _____ PAGE _____
 ENTRY NUMBER: _____ BOOK _____
 STATE OF UTAH, COUNTY OF SUMMIT, DATE: _____ TIME: _____
 RECORDED AND FILED AT THE REQUEST OF: _____

SEE SHEET 7

SEE SHEET 6

SEE SHEET 5

WEST HILLS INCORPORATION
 A PART OF SECTIONS 2, 3, 10, 11, 12, 13, 14, 15, 22, 23 AND 24, TOWNSHIP
 2 SOUTH, RANGE 5 EAST, AND A PART OF SECTIONS 18 AND 19,
 TOWNSHIP 2 SOUTH, RANGE 6 EAST, SALT LAKE BASE AND MERIDIAN
 SUMMIT COUNTY, UTAH
 OCTOBER 2024



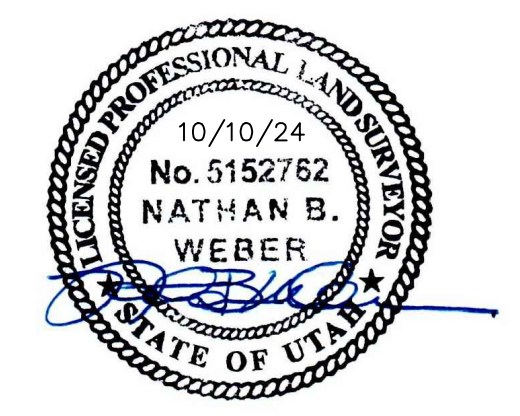
LEGEND

	INCORPORATION BOUNDARY
	SECTION LINE
	ADJOINING PROPERTY
	SUMMIT/WASATCH COUNTY LINE
	SHEET MATCH LINE
	INCORPORATION CORNER

SHEET 5 OF 7

DIAMOND
LAND SURVEYING

6891 South 700 West Ste. 150
Midvale, Utah 84047
Phone (801) 266-5099 Fax (801) 266-5032
office@diamondlandsurveying.com
www.diamondlandsurveying.com



WEST HILLS INCORPORATION

LOCATED IN TOWNSHIP 2 SOUTH, RANGE 5 AND 6 EAST,
SALT LAKE BASE & MERIDIAN

RECORDED

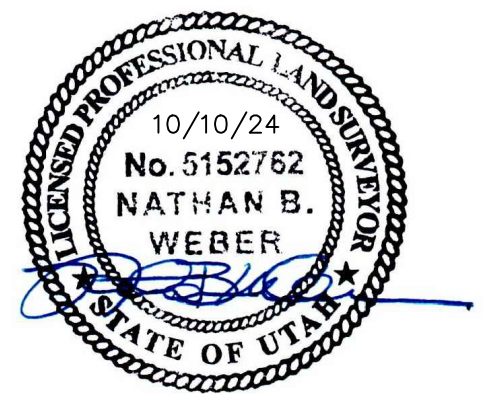
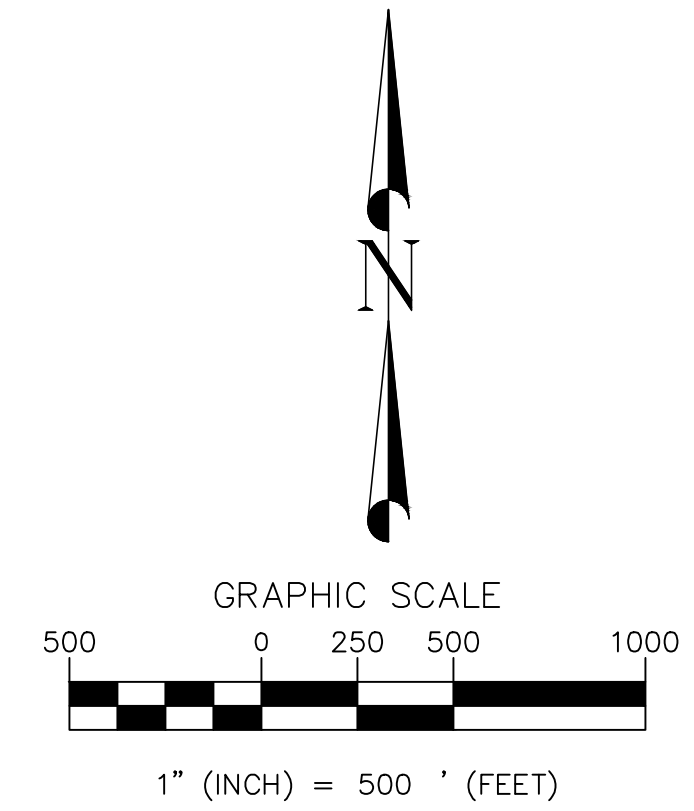
ENTRY NUMBER: _____, BOOK _____, PAGE _____

STATE OF UTAH, COUNTY OF SUMMIT, DATE: _____, TIME: _____

RECORDED AND FILED AT THE REQUEST OF: _____

WEST HILLS INCORPORATION
 A PART OF SECTIONS 2, 3, 10, 11, 12, 13, 14, 15, 22, 23 AND 24, TOWNSHIP
 2 SOUTH, RANGE 5 EAST, AND A PART OF SECTIONS 18 AND 19,
 TOWNSHIP 2 SOUTH, RANGE 6 EAST, SALT LAKE BASE AND MERIDIAN
 SUMMIT COUNTY, UTAH
 OCTOBER 2024

SEE SHEET 7



LEGEND

	INCORPORATION BOUNDARY
	SECTION LINE
	ADJOINING PROPERTY
	SUMMIT/WASATCH COUNTY LINE
	SHEET MATCH LINE
	INCORPORATION CORNER

SHEET 6 OF 7

DIAMOND
LAND SURVEYING

6891 South 700 West Ste. 150
Midvale, Utah 84047
Phone (801) 266-5099 Fax (801) 266-5032
office@diamondlandsurveying.com
www.diamondlandsurveying.com

WEST HILLS INCORPORATION

LOCATED IN TOWNSHIP 2 SOUTH, RANGE 5 AND 6 EAST,
SALT LAKE BASE & MERIDIAN

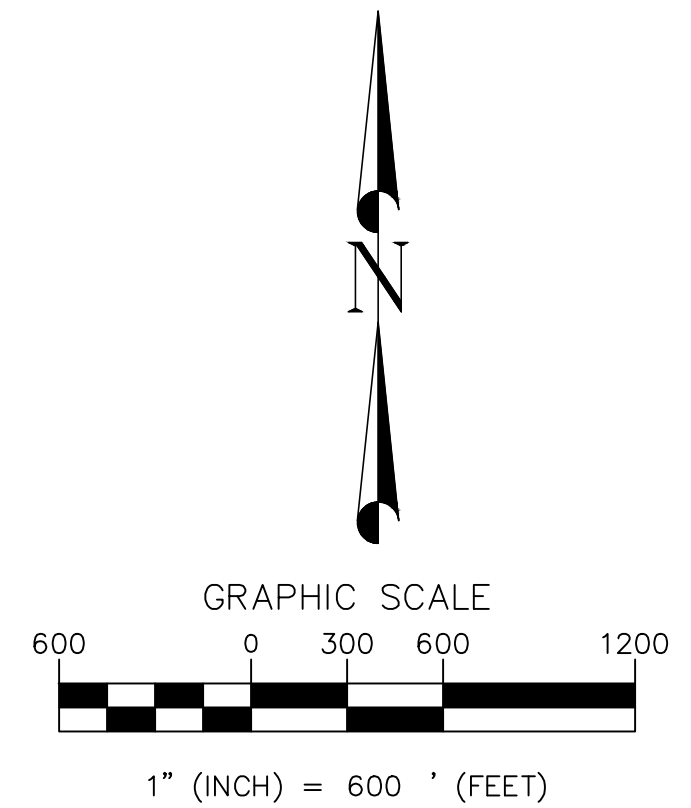
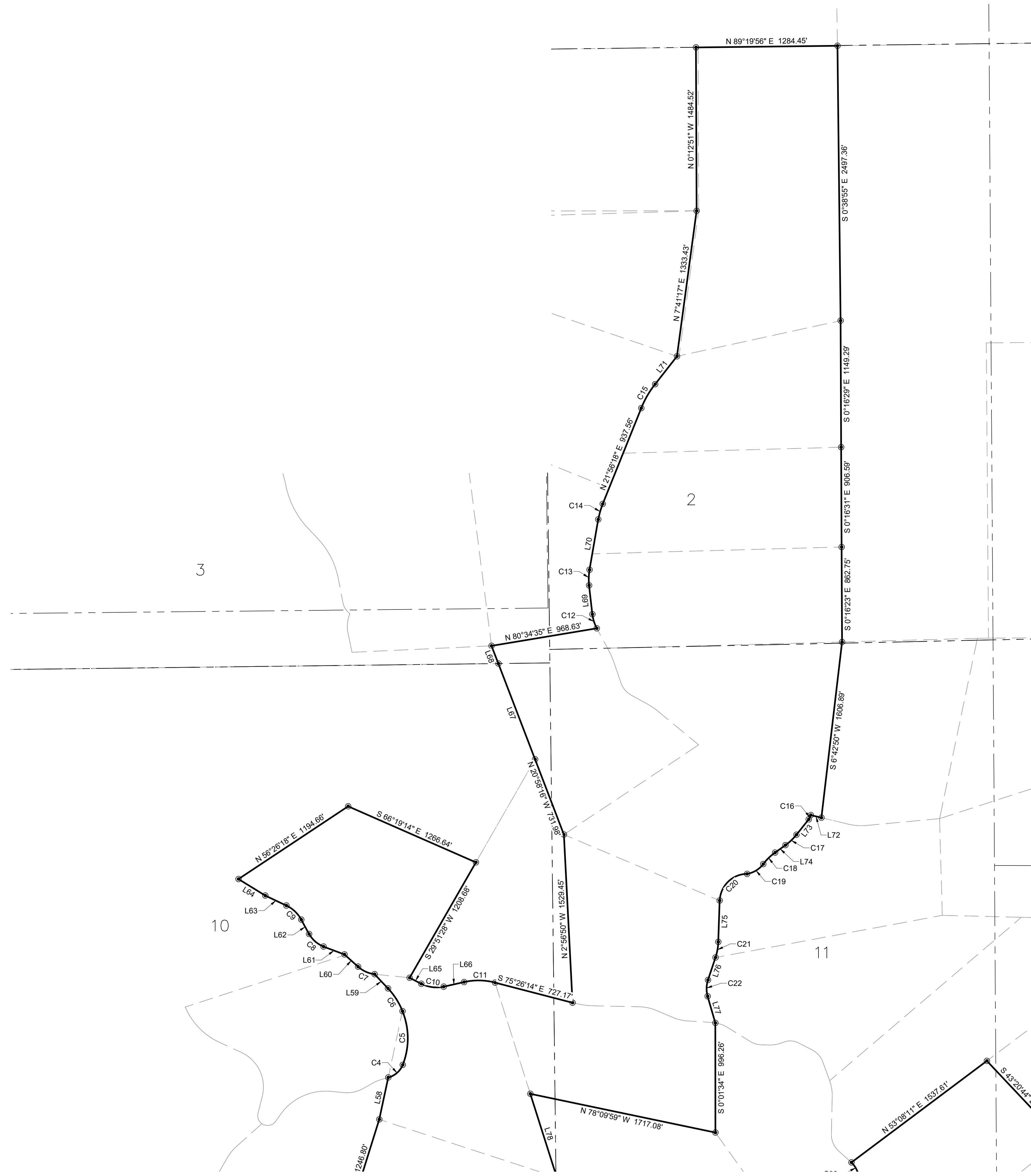
RECORDED

ENTRY NUMBER: _____ BOOK _____ PAGE _____

STATE OF UTAH, COUNTY OF SUMMIT, DATE: _____ TIME: _____

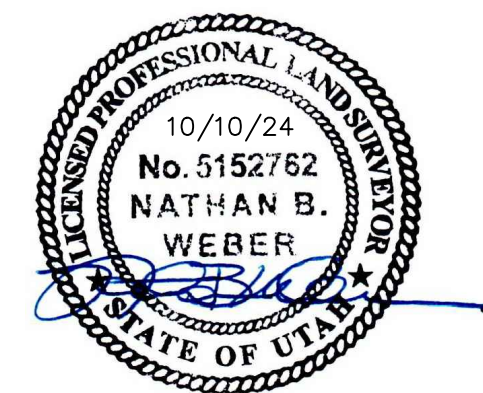
RECORDED AND FILED AT THE REQUEST OF: _____

WEST HILLS INCORPORATION
 A PART OF SECTIONS 2, 3, 10, 11, 12, 13, 14, 15, 22, 23 AND 24, TOWNSHIP
 2 SOUTH, RANGE 5 EAST, AND A PART OF SECTIONS 18 AND 19,
 TOWNSHIP 2 SOUTH, RANGE 6 EAST, SALT LAKE BASE AND MERIDIAN
 SUMMIT COUNTY, UTAH
 OCTOBER 2024



LEGEND

	INCORPORATION BOUNDARY
	SECTION LINE
	ADJOINING PROPERTY
	SUMMIT/WASATCH COUNTY LINE
	SHEET MATCH LINE
	INCORPORATION CORNER



SHEET 7 OF 7

**DIAMOND
LAND SURVEYING**
 6891 South 700 West Ste. 150
 Midvale, Utah 84047
 Phone (801) 266-5099 Fax (801) 266-5032
 office@diamondlandsurveying.com
 www.diamondlandsurveying.com

WEST HILLS INCORPORATION

LOCATED IN TOWNSHIP 2 SOUTH, RANGE 5 AND 6 EAST,
SALT LAKE BASE & MERIDIAN

RECORDED

ENTRY NUMBER: _____, BOOK _____, PAGE _____

STATE OF UTAH, COUNTY OF SUMMIT, DATE: _____, TIME: _____

RECORDED AND FILED AT THE REQUEST OF: _____

SEE SHEET 4

SEE SHEET 6